

Model 3370



Shower bath

Shower, bath and treatment in one



- Unique concept: shallow bath, stretcher shower and nursing table.
- Electrically-adjustable sides, deep/shallow and height adjustable.
- Exchangeable battery box.
- Very comfortable and easy to maintain.
- Moves on castors, mobile hoist can pass underneath.
- Optional removable side bars.



Lift & Care systems for people with reduced mobility

www.handimove.com

Shower bath

● Dimensions and specifications

Maximum Safe Working Load 200 kg
(including patient, accessories and water)

Trolley mass 100 kg

Trolley dimensions:

Trolley overall length 2165 mm

Trolley overall width 775 mm

Tub platform length 1825 mm

Tub platform width 480 mm

Wheel base 1165 mm

Wheel track 690 mm

Adjustment range:

Maximum overall height 1184 mm

Trolley maximum height 1109 mm

Minimum overall height 629 mm

Trolley minimum height 554 mm

Maximum patient platform height 929 mm

Maximum tub depth 210 mm

Electrical specifications:

Rechargeable battery 24V DC - 2,9 Ah

Battery charger input 230/240 V AC

Battery charge time: 6 hours (max)

Number of full load cycles 30

Time to raise or lower patient platform 30 sec

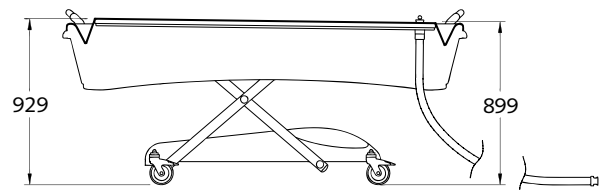
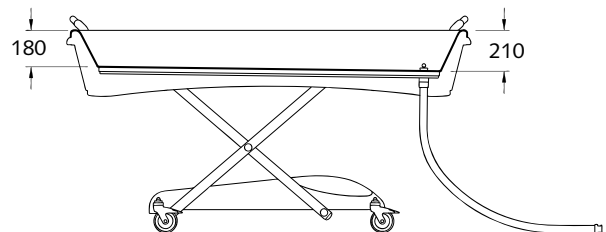
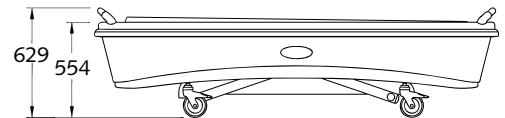
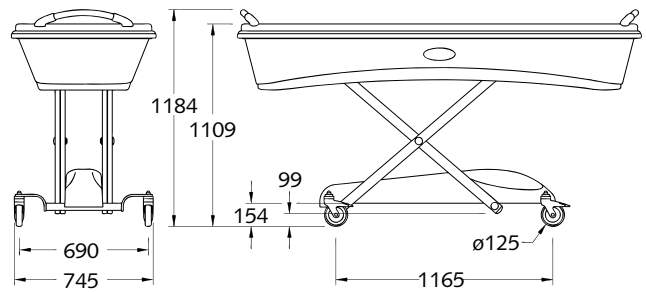
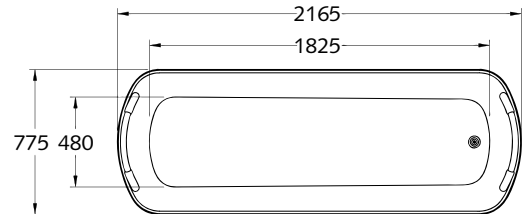
Time to raise or lower tub sides 30 sec

Accessories:

Spare battery

Option:

Sidebars in stainless steel



For free demonstration or further information

